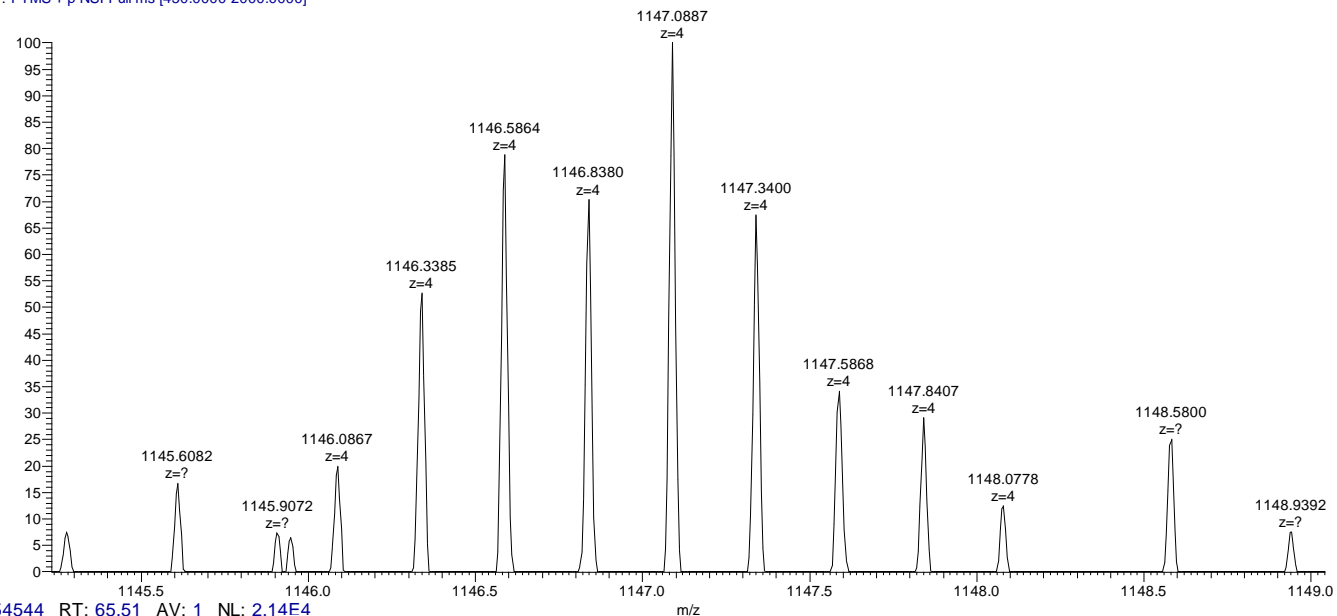
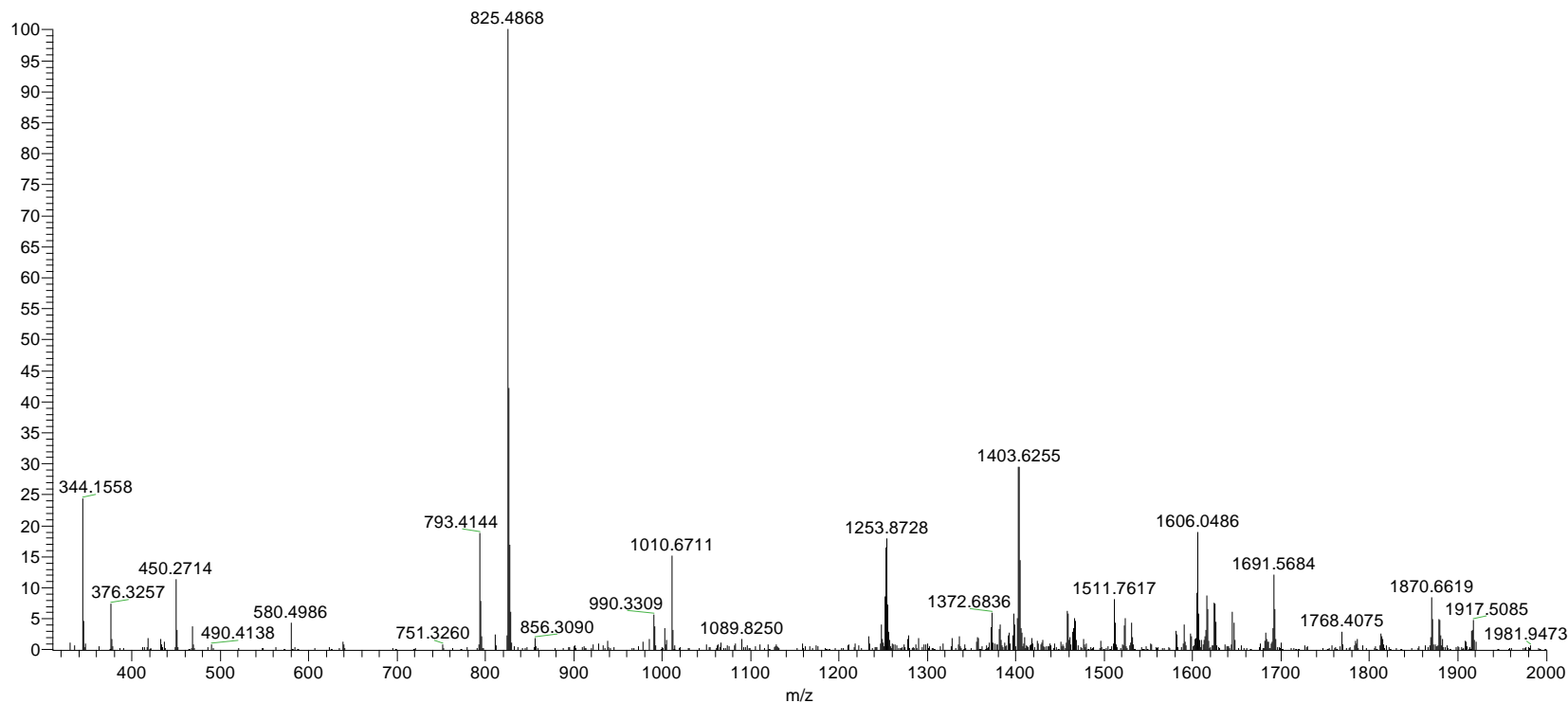


S 054544 054544 1146.5872
 | NumberOfPeaks 575
 | RetTime 3930.709044
 | IonInjectionTime 20.000000
 | ActivationType CID
 | InstrumentType ITMS
 | PrecursorScan 54534
 | ActivationCenter 1146.59
 | **MonoisotopicMz 0**
 Z 4 4583.326971
 330.26825 232.0
 335.04874 149.0
 344.15576 5222.1

180110_YG_1228_1 #54534 RT: 65.50 AV: 1 NL: 2.59E6
 T: FTMS + p NSI Full ms [450.0000-2000.0000]



180110_YG_1228_1 #54544 RT: 65.51 AV: 1 NL: 2.14E4
 T: ITMS + c NSI r d Full ms2 1146.5872@cid35.00 [310.00]



问题：如何提到准确的Monoisotopic m/z?